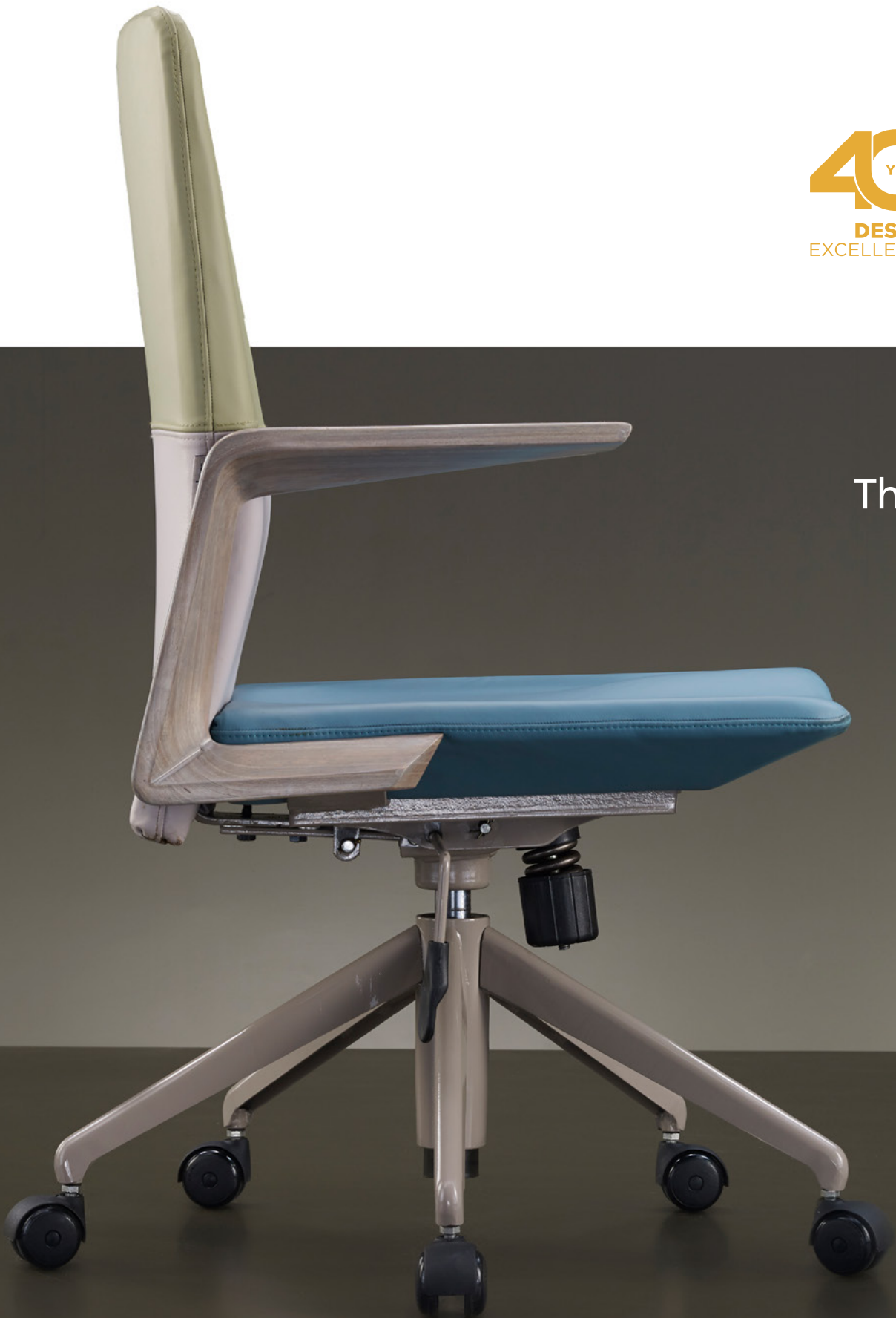
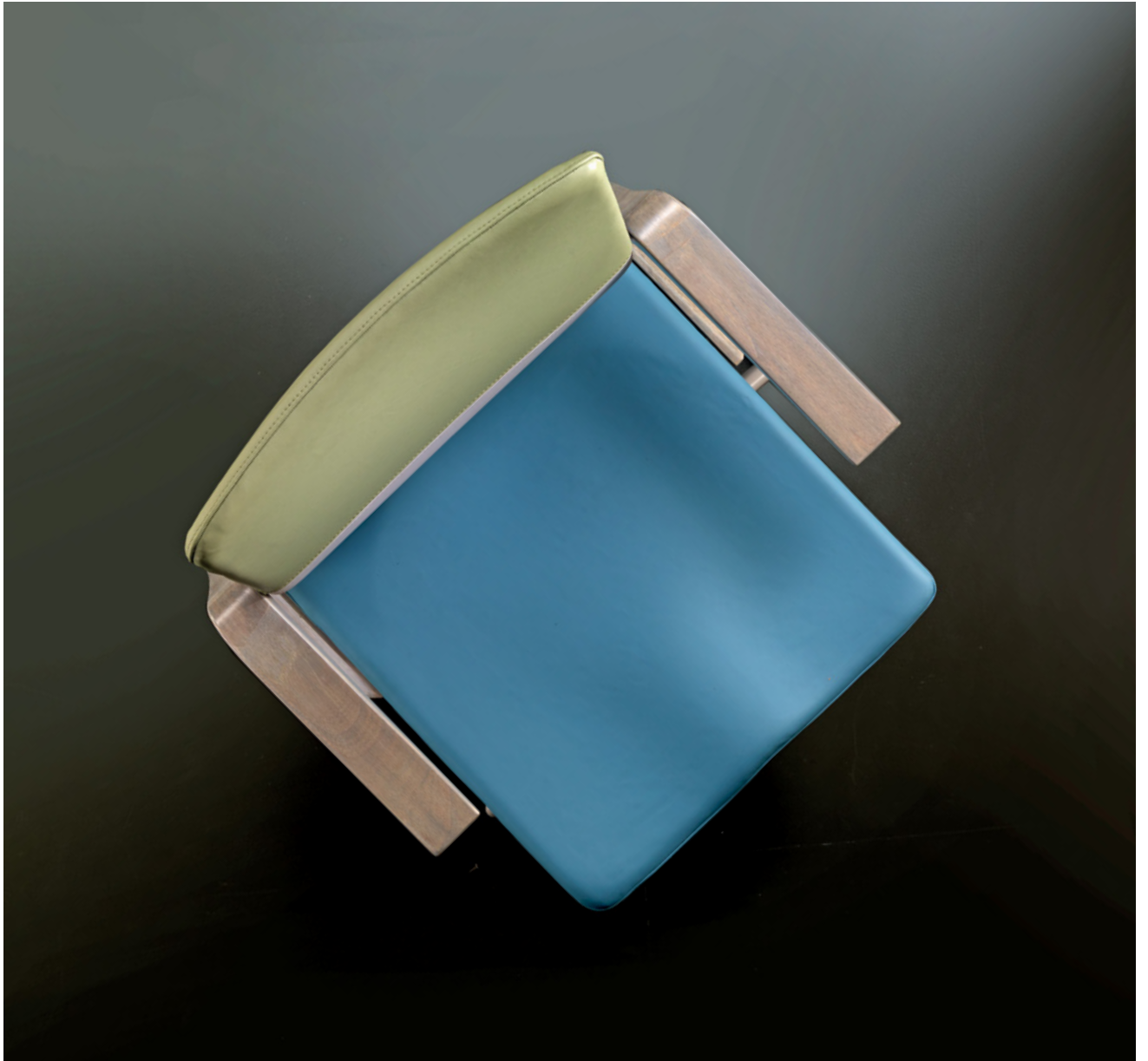


amber
DESIGN, THROUGH DETAIL

40 YEARS
OF
DESIGN
EXCELLENCE

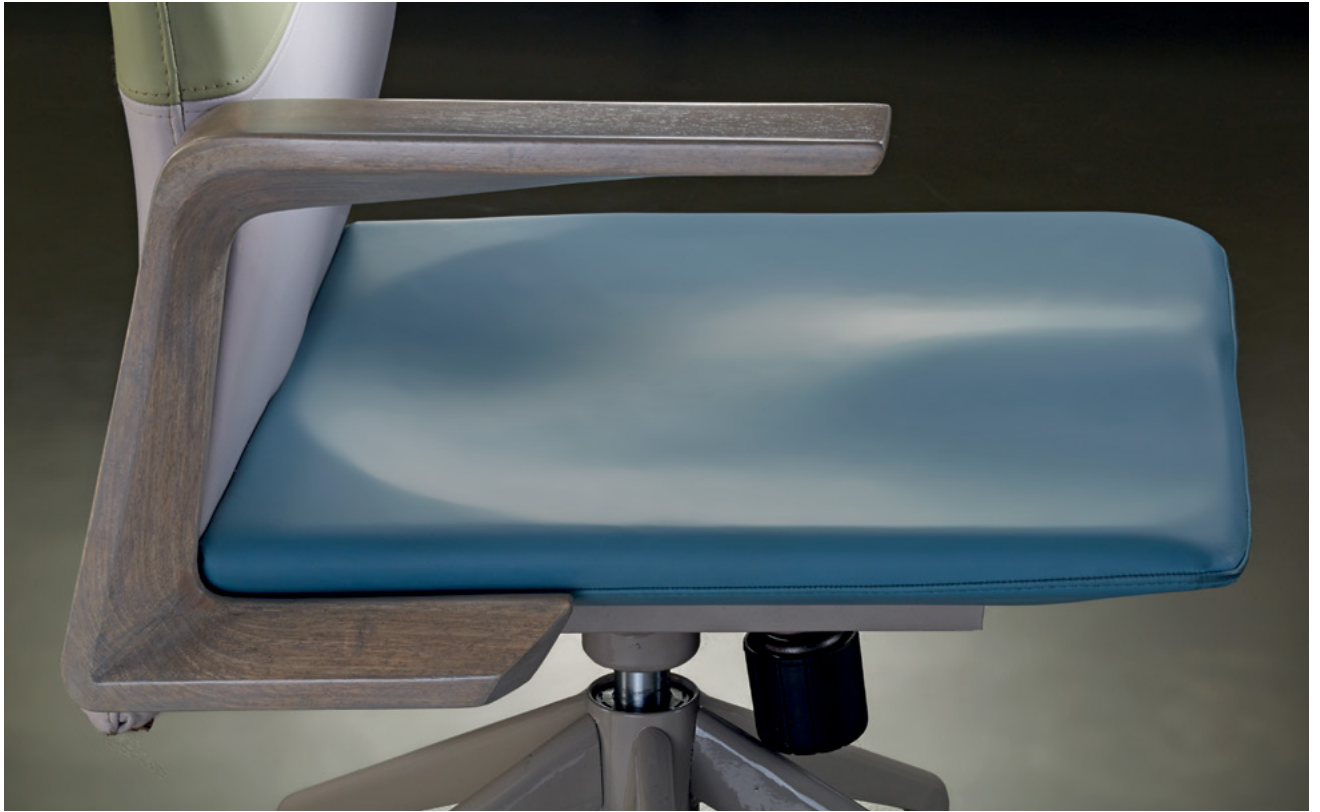


Thin



Thin





Sleek and slender, the Thin series is about achieving the right support at the right point. Ergonomic and comfortable, the seat and back of the chair are made of moulded 3D cushion, shaped to provide the proper support to the user. Cantilevered arms made of moulded compressed wood are chamfered to achieve lightness in elevation, without compromising on the chair's strength and comfort.

Thin





Thin comes in various forms, and you can choose as per your preference. You can opt for a high back or a low back, with armrest or without armrest. Just the way you prefer!



Thin





Thin is apt for any contemporary or modern set up — the legs of the static chair, designed in the moulded compressed wood form an essential element. These chairs are perfect as visitors seatings.



Thin

The Thin collection also includes the table and cafeteria chairs. The laminated tabletop has its edges chamfered, and a metal frame connects these moulded compressed wood legs making it sturdy and sharp. The Thin cafeteria chair with and without arms also follow the same design language.



The Thin collection further extends itself to include the sofas, single and two-seater with a centre/corner table. Simple and smart for private meetings and also works perfectly for lounge and waiting areas.



For waiting and reception areas, the Thin collection also provides a continuous and running seater. Customisable in different modules as per the requirements.

Thin





We are proud to introduce our new in-house design studio, **Karnima Design Lab**. These new range of seatings and a few other products are outcomes of this young Studio. Binal Nirmal, the design director of Karnima Design Lab, comes with her fresh ideas and international exposure for product design.

She first studied architecture from Kamla Raheja Vidyanidhi Institute for Architecture and Environmental Studies (KRVIA), Mumbai and graduated in 2013. She believes her experience in the field of architecture, gives her a better understanding of spaces and interiors, which provides her with better intelligence for interior products.

In 2015, she went to study Product Design at the prestigious Domus Academy, Milan, Italy by winning scholarship competition conducted by Domus in collaboration with Magis, an Italian furniture brand. During her course at Domus, she got a chance to work with some famous Italian companies like Plust collection, Foscarini, Italia Independent, and a few other. She also learnt a lot from some great Italian designers like Patricia Urquiola, Matteo Ragni, Chiara Moreschi, and many more. In Italy, she got a chance to work with Riccardo Giovanetti at his Studio, from whom she learnt a lot about Italian product design. She believes in making functional and aesthetic products by stretching the characteristics of each material. Her design philosophy and thought processes are seen quite evidently in her products!

Product Design
Karnima Design lab

Concept and Art Direction
Karnima Design Lab

Photography
Vinay Mahidhar

Graphic Design
Karnima Design Lab

Print
Pragati Offset Pvt. Ltd.

Amber is a BIFMA, ISO 9001:2015 and ISO 14001:2015 certified company.

The copyrights of all designs, specifications and information contained in this catalogue are and shall remain the property of Amber and must not be used, copied, published or divulged by any person in whole or in part without exclusive written authorisation from Amber.

While the product images, specifications and other details herein are represented to the best of graphic possibilities, Amber reserves the right to change any or all these in the interest of development/improvement.



Amber Designworks

11A, LBS Marg, Vikhroli West,
Mumbai 400079 India

+91-22-6799 9933/66
+91-96198 79511

info@amberindia.com
www.amberindia.com

